



Empow**HER**

ADP for Women on the first rungs
of the Leadership Ladder

“There is no limit to what we,
as women, can accomplish.”

Michelle Obama



The challenge of the broken ladder rung

“Conventional wisdom says that women hit a ‘glass ceiling’ that prevents them from reaching senior leadership positions. In reality, the biggest obstacle that women face is the first step up to manager – the ‘broken rung’. For every 100 men promoted to manager, only 85 women are promoted. This broken rung results in more women getting stuck at entry-level and fewer women becoming managers. As a result, there are significantly fewer women to advance to higher levels.

The broken rung has a long-term impact on the talent pipeline. Since men significantly outnumber women at the manager level, there are far fewer women to hire or promote to senior managers. And the number of women decreases at every subsequent level. So even as hiring and promotion rates improve for women at senior levels, women collectively can never catch up. There are simply too few women to advance.”

McKinsey 2020 Women in the Workplace report



“EmpowHER equips women to successfully navigate the challenging transition from leading self to leading others. The programme inspires and enables them to thrive in their role as leaders, as well as in other areas of their lives. Through this, EmpowHER expands what is possible for them and touches their future.”

Alinda

Alinda Nortje, Free To Grow Founder & Executive Chair and author of EmpowHER



Listen to Alinda share the rationale behind EmpowHER



LINK: [Read the full McKinsey report: Women in the Workplace 2020](#)



EmpowHER

...is aimed at high potential women on the Leading Self and Leading Others levels: women who have been identified as future leaders and those who are already holding positions as first line leaders.

The need for confidence building at the onset of a woman's career

"Women cited **confidence** (63%) and **determination** (63%) as the top two characteristics of leaders; however, less than half of women (49%) personally identify with being confident today. Further, confidence was not a strength for women in their early years, with less than one-third (31%) of women describing themselves as being confident while growing up. Entry-level working women report the lowest levels of confidence (44%) compared to their professional counterparts (mid-level: 52%, senior-level: 55%). This illustrates a **strong need for confidence-building at the onset of a woman's career.**"

KPMG Women's Leadership Study



[LINK: Read the full KPMG report: KPMG Women's Leadership Study: Moving Women Forward into Leadership Roles](#)

Boosting employee wellbeing, growth and engagement



1 Powerful modules presented virtually or face-to-face



2 A blend of complementary activities and tools

- Women's support circles
- Informal Buddy coaching
- Individual coaching by accredited FTG coaches
- In-house mentoring
- Growth projects, focusing on the application of what has been learned
- Self-directed learning through a Step-by-Step workbook
- Reinforcing key messages through WhatsApp

Let us shape a unique journey for you, combining elements of the above that meet your needs.



LINK: View or download a detailed overview of the content



LINK: Case Study: Rainbow Chicken do more for the accelerated development of high-potential women

Boosting employee wellbeing, growth and engagement

4. Equipping other leaders to create an inclusive, enabling 'container' **FREE TO GROW**



Drive, ambition and grit are undoubtedly characteristics that enable women to get into leadership positions. However, the organisational climate is also a key factor – it becomes the container that either enhances or inhibits women's advancement into more senior leadership roles.

We help shape a safe and supportive climate through the following:

1 Equipping participating women's Managers

Research agrees that support from the direct manager of a woman is the most critical organisational factor in enhancing the career advancement of women.

Through a tailor-made combination of modules on **Coaching**, and **From Unconscious Bias to Inclusion** we can equip your managers to support and advance the growth of the women they lead. These sessions can be presented in bite sized chunks or as a full programme.

2 Supporting and involving Female Role Models

Studies show that role models are a highly effective way to encourage women, especially those facing a host of social challenges and obstacles, to make different choices for themselves. Female role models show what is possible, inspire, and demonstrate ways to overcome challenges.

- We can actively involve the Female role models in 'growing by lifting others' through supporting them with the tools and skills to facilitate Women's Growth Circles.
- Your Female Role Models can also be invited to be part of the development programme presented for the participating Women's Managers.
- Qualified women coaches in our team can support your female role models through individual coaching.



LINK: Download a useful eBook on Mentoring, updated for men mentoring women in the #MeToo era

LINK: See our mentoring invitation, an example of one of the tools that is part of the EmpowHER journey

Boosting employee wellbeing, growth and engagement

5. Women's Career Enabler survey

Underpinning this programme is the Women's Career Enabler Survey: a useful tool for pre- and post assessment

This tool provides organisations with a comprehensive snapshot of the career aspirations of women on these job levels and identifies the key challenges to their career progress, including personal, interpersonal and organisational factors as well as culture, family and household responsibilities.

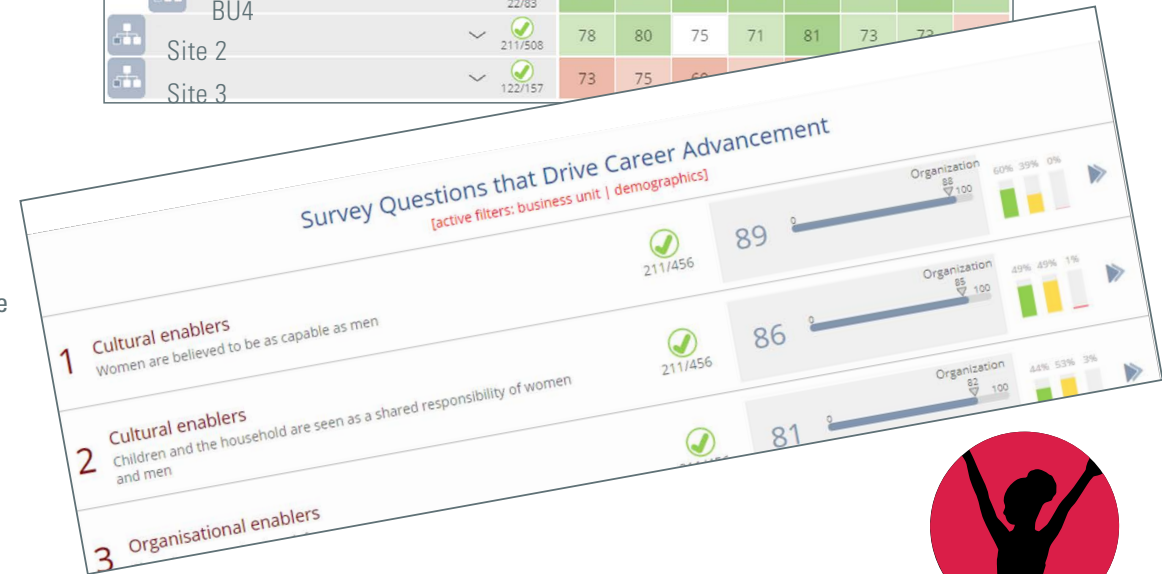
The survey is done as a pre- and post assessment, indicating areas of growth and remaining concerns that need to be addressed to help these women thrive in the workplace.



"The Career Enabler Survey is an amazing tool too gather insights from employees about the factors that enable or hinder their career growth. It gives an organisation a view of how our women are experiencing culture, leadership, learning opportunities, and support systems that contribute to their professional development, and enables us to explore what we can do to bridge the gaps that exist to ultimately create positive people experiences and actually ensure that we are living our company's values and demonstrate behaviours that align Tiger's goals with individual aspirations."

Rovesha Chitanand

People Experience Manager, Tiger Brands



Boosting employee wellbeing, growth and engagement



“Basadi Bereka has also made a major impact on the women through the mentorship and role model component which allows growth and potential to be launched. Women’s Empowerment is exceptionally important to us and through this intervention we believe that our values are emphasised.”

Barney Khumalo

HR Director, Rainbow Chicken



“This programme is a real gem and has tremendous impact. It was so successful that we are continuing the journey. We are extremely impressed with how the programme is put together and presented. It is innovative, comprehensive, fresh, deep and meaningful. It can deliver change in diversity management to ensure that Rainbow Chicken has the right number of talented women available at all times. Thank you Free To Grow for your big contribution in designing this programme, facilitating it with such skill and love and supporting us throughout the journey.”

Ansa Du Toit

Talent, Learning & Development Executive



“We had a vision which Free To Grow brought to life. It has not only developed stronger, well equipped women in the workplace but has brought an evolution to our organisation. I have seen the impact firsthand. This Programme is truly a movement fit for the equity agenda we are driving. I am eager to again see a similar growth for the new Cohort, and to spread the programme to even more Chicken sites on a virtual platform.”

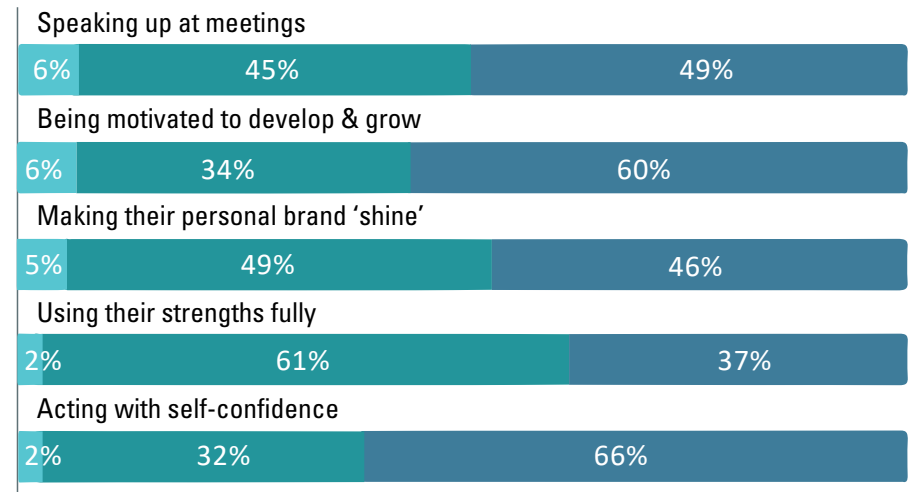
Sithembile Ngcobo

Learning & Development Specialist

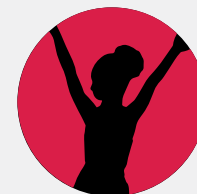
Programme evaluation

At the end of the programme, the first six groups of women from Rainbow Chicken were asked to assess the impact of the programme on various areas of their behaviour at work.

The results of this self-assessment are below:



No impact Small impact Fair impact Large impact



LINK: Read an article on RCL Foods’ implementation of the programme, branded for them as Basadi Bereka (Women at Work)



“The EmpowHer development programme has truly uplifted the self-confidence of our cohort. It was amazing to witness the amount of eye-openers and shared experiences these women had amongst them – and Nonta, their facilitator, has been a true gem, so accommodating, and undoubtedly inspirational. I am assured that this cohort of women are on a lifelong journey of personal and professional development.”

Jodi Josias

Learning & Development Manager, Heineken



“The programme facilitated by Free to Grow has added immeasurable value to female employees in our business. It focused on delivering a step change intervention for female employees and that is exactly what it has done. The ladies that attended were equipped with tools that have played a crucial part in how to successfully navigate challenges in the workplace while leading their own performance and becoming phenomenal women from a personal perspective. This was a great success at Pies!”

Tsietso Mafoso

HR Business Partner, RCL Foods Pieman's



“The EmpowHER programme created a supportive community where women learned, grew, and thrived as leaders, while also advocating for broader societal change promoting gender equality in leadership roles.”

Pinki Luwaca

HR Executive, PPECB



“This year's Women in Leadership programme has been a powerful one, with our future women leaders gaining critical skills for their professional and personal growth. Each delegate, including the mentors, has benefited tremendously from this customised EmpowHer programme with impacts seen on a personal level, within the PPECB and their respective communities. We have created a powerful group of women leaders who will continue to shine bright as catalysts for change.”

Roshon Omar

Head of Organisational Development & Transformation, PPECB



“The roll-out and content of the Women in Leadership Programme was exemplary, setting a new standard for empowerment and inclusivity in organisational development. The programme not only provided invaluable opportunities to the delegates to enhance their leadership skills but also fostered a culture of support and collaboration.”

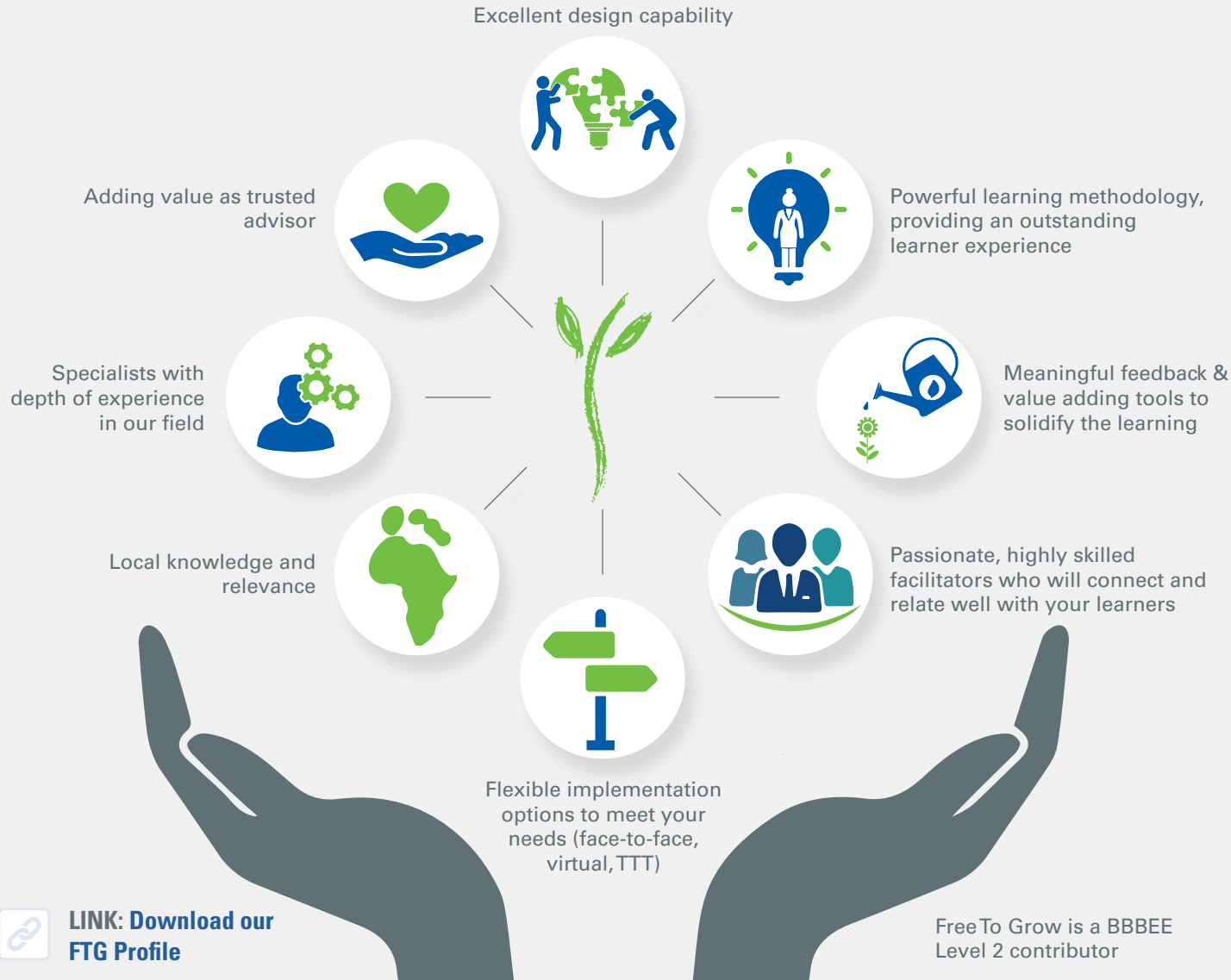
Elbie Nieuwoudt

**Organisational Development Specialist and
Coordinator of the programme, PPECB**

Boosting employee wellbeing, growth and engagement

9. Why partner with Free To Grow in this journey?

30 YEARS 36 COUNTRIES 1 508 ORGANISATIONS 150 316 PEOPLE



[LINK: Download our FTG Profile](#)

Some of our clients

